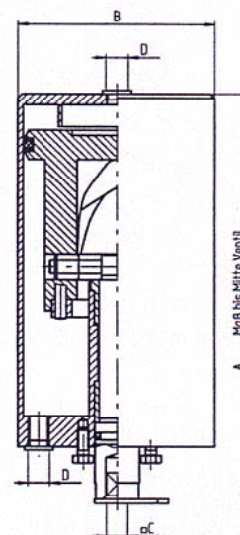


**BUTTERFLY VALVE ACTUATORS**

DN	Art.-Nr.	A	B	C	D	E	G (kg)
25	677	231	90	9,5	R1/8"		2,48
32	"	234	90	9,5	R1/8"		2,48
40	"	236	90	9,5	R1/8"		2,48
50	"	242	90	9,5	R1/8"		2,48
65	"	251	90	9,5	R1/8"		2,48
75/3"	"	260	90	9,5	R1/8"		2,48
80	"	260	90	9,5	R1/8"		2,48
100	"	270	90	9,5	R1/8"		2,48
125	"	369	133	14	R1/8"		7,20
150	"	384	133	14	R1/8"		7,20
200	"	428	133	14	R1/8"		7,20
75/3"	"	291	108	11,5	R1/8"		3,49
80	"	291	108	11,5	R1/8"		3,49
100	"	301	108	11,5	R1/8"		3,49
DN	Art.-Nr.	A	B	C	D	E	G (kg)
25	678	231	90	9,5	R1/8"		3,13
32	"	234	90	9,5	R1/8"		3,13
40	"	236	90	9,5	R1/8"		3,13
50	"	242	90	9,5	R1/8"		3,13
65	"	251	90	9,5	R1/8"		3,13
75/3"	"	260	90	9,5	R1/8"		3,13
80	"	260	90	9,5	R1/8"		3,13
100	"	270	90	9,5	R1/8"		3,13
125	"	369	133	14	R1/8"		9,31
150	"	384	133	14	R1/8"		9,31
200	"	428	133	14	R1/8"		9,31
75/3"	"	291	108	11,5	R1/8"		4,75
80	"	291	108	11,5	R1/8"		4,75
100	"	301	108	11,5	R1/8"		4,75

actuator-pneum.-air/air



actuator-pneum.-air/spring

